



**An Industry
Leader in
Water Management
Solutions**

ABT[®], INC.
Advanced Building Technologies, Inc.

ABT, Inc. has been creating and offering solutions for the challenges of drainage and water management in commercial construction since its founding in 1982.

It began with PolyDrain, a pre-cast trench drain made from polymer concrete. The concept was simple; offer a modular, pre-sloped series of drain sections that could be assembled in the field to provide repeatable drainage performance every time.

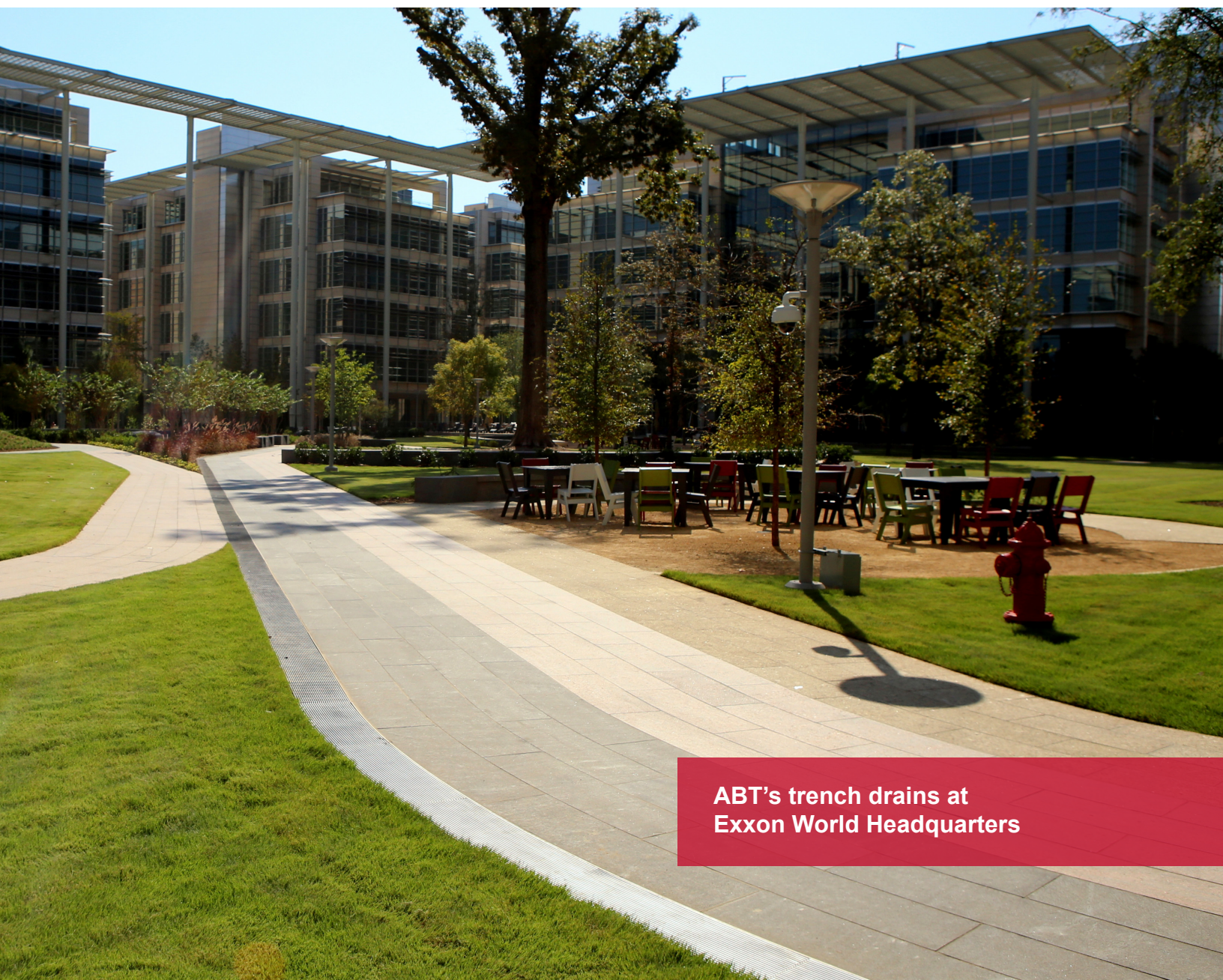
That was the beginning of a 35 year history of manufacturing products that replace site-built drainage products with factory built performance, consistency and reliability. Since then, owners, designers and contractors have come to rely on ABT to provide performance based products offering win-win solutions that address a wide variety of drainage and collection applications. Along the way, the company has acquired dozens of patents and awards for its many innovative products.

At the core of ABT's business philosophy is the desire to help create sustainable infrastructure that respects the value of Earth's water as a resource, not a waste product. To that end, products and technologies have been developed for surface drainage, stormwater management, Clean Water Act compliance, filtration, storage and re-use. ABT proudly offers such widely known trade names as TrenchFormer, FirstFlush, Interceptor, Terminator, Permavoid, CeraCrete and SportsEdge.

As the company has grown, so has the breadth of industries we serve. ABT now offers solutions for applications that are quite diverse such as residential and commercial construction, highways, airports, shipping ports, municipalities, athletic fields and more.



The company, through its distribution network, sells throughout North America and has a number of customers in Mexico, Central America and South America as well as the Middle East and North Africa. Customers and products include the Exxon World Headquarters, the Ports of Los Angeles, Houston, Long Beach and Honolulu, the Interstate Highway System, Best Buy, NASA, SpaceX, San Diego Bay Rapid Transit, Ford Motor, Toyota, and Yankee Stadium, just to name a few.



**ABT's trench drains at
Exxon World Headquarters**

With over a quarter of a million square feet of facilities, ABT's manufacturing capabilities now include: Polymer Concrete Molding, Metal Stamping, Forming and Fabrication, Expanded Polystyrene Forming and Fabrication and Insulative Ceramic Cement Production. Plans are now being developed for the addition of Injection Molding in the near future. ABT has also forged global alliances with innovators and manufacturers around the world in order to bring to our customers the benefits of the best ideas being generated in our industry.

Our Values

Like with any successful business, our people are at the heart of our success. Among our more than one hundred employees, the average seniority with ABT is more than 12 years. That's a powerful testament to the loyalty of the ABT family. In an era when job hopping is the standard instead of the exception, people have chosen ABT as a career choice, not a stepping stone.

As our society now embarks upon a journey of environmental awareness, ABT is positioned to contribute products and practices that will help sustain our planet's most precious resource, its water. We will continue to engage new and exciting technologies and we will develop the products and people that will raise industry awareness of and compliance with water management regulations.

We think of ourselves, in our own way, as stewards of a healthy planet.





Solar Powered Manufacturing Facilities

We are proud to be
“a company with a conscience”
both now and in the future.

AIRPORTS



TrenchFormer XHD
installed at the Denver
airport

Life Safety & Life Cycle

ABT has developed the most robust products for the extreme conditions present at commercial airports. Baggage carts, tugs, snow equipment and huge jets impart constant dynamic and impact loads. A full line of channel drains and grates developed and manufactured by ABT Polymers and ABT Metals, gives designers a range of options for all of their design approaches to these challenges.

These assemblies are conceived and manufactured with the highest degree of safety and the greatest longevity in mind. Modular systems install quickly and easily and offer greater durability than site-built systems. ABT line drain systems have been installed in dozens of airports including Denver, Bush/Houston, JFK/New York and Charlotte.

ROADWAYS



TrenchFormer installed
on the Sacramento
Spaghetti Bowl



Highway barrier drainage

In 1994, the engineering firm of Edwards & Kelcey together with The New Jersey DOT issued a study comparing the performance of PolyDrain Trench Drains to traditional slot drains and drop inlets for roadway drainage. With the conclusions from that study and input from major civil engineering groups, ABT developed the first grated line drain/continuous inlet for roadways and highways in the US. ABT drains are now the current standard for major transportation departments and are currently the basis of design for the California and Texas Departments of Transportation (CalTrans and TXDOT). Since then, miles of PolyDrain and TrenchFormer trench drains have been installed on the US Federal Highway System in dozens of states from Florida to California to New York.

PORTS



Patented Non-Rigid Retention



TrenchFormer XHD installed
at the Port of Houston



Longevity & Eco Sensitive

The challenges of designing and constructing commercial container ports are enormous. Elevated decks support hundred ton cranes that operate in an environment of salt water, tides and constant punishing traffic. And they have to be efficiently drained by products that can withstand this environment.

Until the introduction of modular ABT drains and their non-rigid retention systems, failures of site built drainage systems plagued this industry for years. ABT drains have since become the products of choice for this dynamic market and are used to capture, convey, filter, infiltrate, store, and re-use storm water without a single product failure.



LOW IMPACT DEVELOPMENT



Sub Base Replacement

Sustainability

Sustainability plays a critical role in all facets of ABT corporate decision making. These principles are the framework for the development of a line of product offerings that address the demands of Low Impact Development as mandated by the Federal Clean Water Act. Products like PolyDrain, whose superior chemical resistance prevents dangerous contaminants from entering our groundwater. TrenchFormer, whose design versatility allows stormwater to be routed further to areas where it can be utilized as a resource, not treated as a waste product to be discarded. FirstFlush whose hydrocarbon and suspended solids contaminant removal capabilities help clean our most precious resource. And finally Permavoid, the hallmark of our sustainable products whose ability to mimic natural stormwater behavior is unparalleled in the industry.



ABT Permavoid being installed
at the JFK Plaza



ABT's stainless tunnel
installed in a rain garden

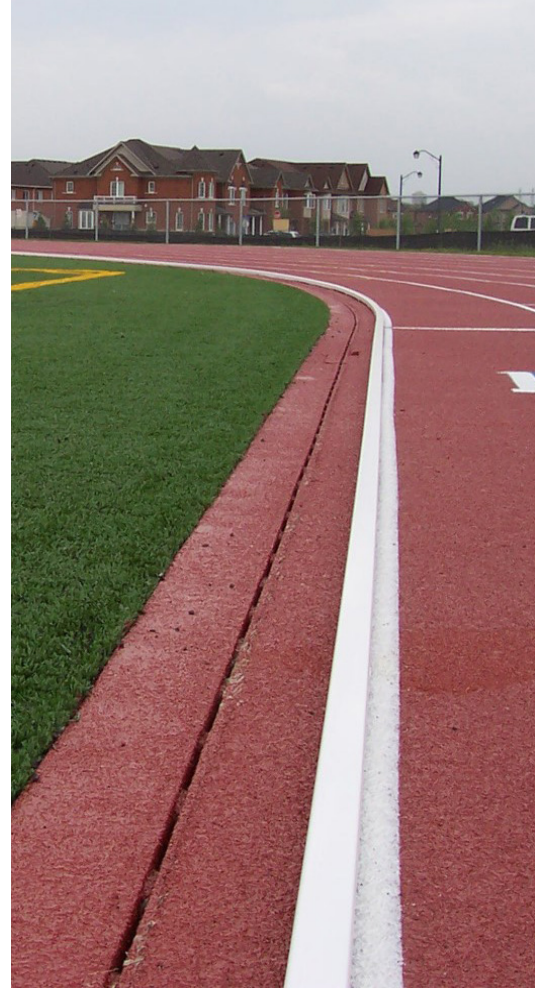


ATHLETIC FIELDS & STADIUMS

Safety

Since 2004, the SportsEdge division has provided athletic field equipment to the sports construction industry. Beginning with track perimeter drainage, we now offer a variety of water management solutions that assist owners with Clean Water Act compliance, create water storage for irrigation, and help to build well draining fields on challenging sites. Owners now look to SportsEdge for total storm water management design ideas.

In addition, we offer a full line of the in-ground and above-ground equipment required by high school, college and professional stadiums. These products range from toe boards to football goals to resilient shock pad turf underlayment. The common element that ties them together is safety. Every part we make eliminates dangerous edges and protrusions and uses resilient materials wherever possible. Our athletes deserve nothing less than world-class products.



Innovative equipment elements

ABT METALS



Tube bending at ABT Metals



Custom Design

ABT Metals Manufacturing is a full service job shop dedicated to customer service. We have the resources to handle even the most difficult requirements.

Our capabilities include; cutting, stamping, punching, machining, bending, and deep drawing. ABT Metals offers a variety of services to our customers such as value added engineering, custom fabrications, prototyping, assembly, packaging, and tool repair maintenance.

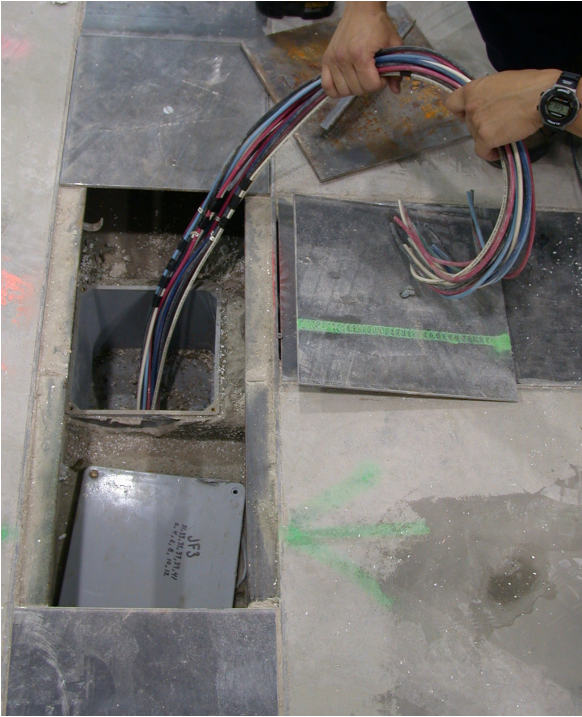
EXPANDED POLYSTYRENE (EPS) MANUFACTURING



Energy Management

The ABT Foam plant is a state-of-the-art facility where raw material beads are expanded creating huge EPS billets. From these billets are made parts for numerous industries including decorative elements for commercial building construction, substrates for tapered roofs, insulating wall panels and geofoam blocks for lightweight fill. Using unique five-axis CAD based cutting equipment, all manner of shapes and details are possible. But the primary focus of this division is the production of forms used in the building of structures used in water treatment and management. These modular forming systems save time and money on a job site and create accurate and repeatable products like oil/water separators, FirstFlush filtration units and even ultra-deep trench drains which would not be possible with traditional hand forming techniques.

POWER & DATA



ABT's PathWay communication box

Thousands of miles of cabling are used in a wide variety of industries like telecommunications, ground transportation, wind farms and server farms just to name a few. The development of modern power and data transmission cables that are more delicate and sophisticated requires changes in the way they are installed and managed. These lines can no longer be pulled through long conduits but must be laid in accessible channels. ABT has developed a modular in-ground tray system called PathWay that combines the technologies of pre-formed trenches and unistrut mounting brackets into a single step installation that makes them more efficient and versatile than ever. Cable repair, replacement and upgrades are made simple with PathWay.

Service Utilities



Explore our innovative solutions

Visit www.abtdrains.com



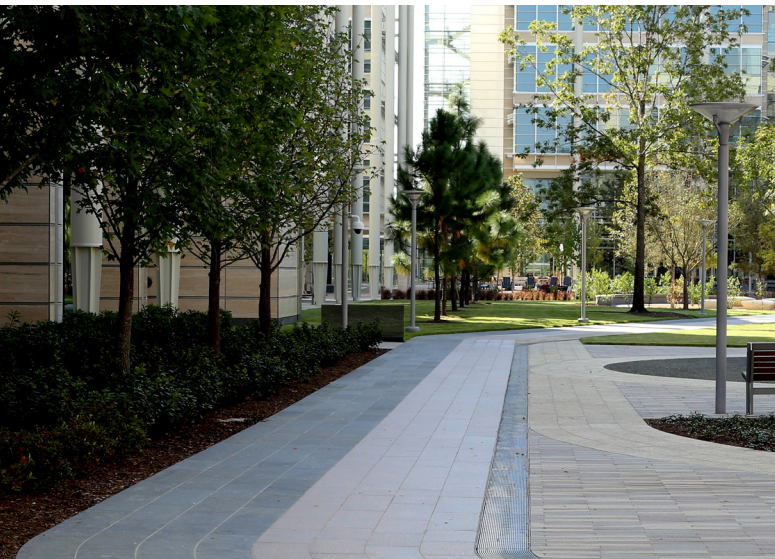
800.438.6057



info@abtdrains.com



259 Murdock Road, Troutman, NC 28166



Water Management Solutions That You Can Trust.

DISCLAIMER: The customer and the customer's architects, engineers, consultants and other professionals are completely responsible for the selection, installation, and maintenance of any product purchased from ABT, and EXCEPT AS EXPRESSLY PROVIDED IN ABT'S STANDARD WARRANTIES, ABT MAKES NO WARRANTY, EXPRESS OR IMPLIED, AS TO THE SUITABILITY, DESIGN, MERCHANTABILITY, OR FITNESS OF THE PRODUCT FOR CUSTOMER'S APPLICATION. Copies of ABT's standard warranties are available at www.abtdrains.com.

The information contained within is believed to be accurate but not guaranteed to be so. The customer should evaluate the suitability and safety of these products for any application. ABT assumes no liability for the end results since the conditions of installation and use are beyond the control of ABT. Concrete specifications, placement, reinforcement and structural considerations are the responsibility of the customer. ABT reserves the right to change the price, availability, specifications, and content of any of its products, literature or other information in all media at any time without notification.

PolyDrain®, PolyDyn®, PolyChampion®, GreenDot®, RedDot®, PolyWall®, TrenchFormer® are registered trademarks of ABT, Inc.®. USA Patent Numbers 5,281,051; 5,348,421; 5,393,171; 5,399,047; 5,573,350; 5,702,204; 5,890,839; 6,443,656; 6,533,497; 6,926,245 : Canada 2,080,136; 2,131,866; 2,131,867; 2,139,405; 2,139,407 : Mexico 189,218; 189,436; 197,851 : Other US and foreign patents pending.

9/27/2017-01